

Cognitive Music Modelling: an Information Dynamics Approach

Samer A. Abdallah, Henrik Ekeus, Peter Foster
Andrew Robertson and Mark D. Plumbley
Centre for Digital Music
Queen Mary University of London
Mile End Road, London E1 4NS

Abstract—We describe an information-theoretic approach to the analysis of music and other sequential data, which emphasises the predictive aspects of perception, and the dynamic process of forming and modifying expectations about an unfolding stream of data, characterising these using the tools of information theory: entropies, mutual informations, and related quantities. After reviewing the theoretical foundations, we discuss a few emerging areas of application, including musicological analysis, real-time beat-tracking analysis, and the generation of musical materials as a cognitively-informed compositional aid.

I. INTRODUCTION

The relationship between Shannon’s [1] information theory and music and art in general has been the subject of some interest since the 1950s [2]–[7]. The general thesis is that perceptible qualities and subjective states like uncertainty, surprise, complexity, tension, and interestingness are closely related to information-theoretic quantities like entropy, relative entropy, and mutual information.

Music is also an inherently dynamic process, where listeners build up expectations about what is to happen next, which may be fulfilled immediately, after some delay, or modified as the music unfolds. In this paper, we explore this “Information Dynamics” view of music, discussing the theory behind it and some emerging applications.

A. Expectation and surprise in music

The thesis that the musical experience is strongly shaped by the generation and playing out of strong and weak expectations was put forward by, amongst others, music theorists L. B. Meyer [6] and Narmour [8], but was recognised much earlier; for example, it was elegantly put by Hanslick [9] in the nineteenth century:

“The most important factor in the mental process which accompanies the act of listening to music, and which converts it to a source of pleasure, is ...the intellectual satisfaction which the listener derives from continually following and anticipating the composer’s intentions—now, to see his expectations fulfilled, and now, to find himself agreeably mistaken.

An essential aspect of this is that music is experienced as a phenomenon that unfolds in time, rather than being apprehended as a static object presented in its entirety. Meyer argued

that the experience depends on how we change and revise our conceptions *as events happen*, on how expectation and prediction interact with occurrence, and that, to a large degree, the way to understand the effect of music is to focus on this ‘kinetics’ of expectation and surprise.

Prediction and expectation are essentially probabilistic concepts and can be treated mathematically using probability theory. We suppose that when we listen to music, expectations are created on the basis of our familiarity with various styles of music and our ability to detect and learn statistical regularities in the music as they emerge. There is experimental evidence that human listeners are able to internalise statistical knowledge about musical structure, e.g. [10], [11], and also that statistical models can form an effective basis for computational analysis of music, e.g. [12]–[14].

With a probabilistic framework for music modelling and prediction in hand, we are in a position to compute various information-theoretic quantities like entropy, relative entropy, and mutual information. Berlyne [15] called such quantities ‘collative variables’, since they are to do with patterns of occurrence rather than medium-specific details, and developed the ideas of ‘information aesthetics’ in an experimental setting.

B. Information dynamic approach

Our working hypothesis is that, as a listener (to which will refer as ‘it’) listens to a piece of music, it maintains a dynamically evolving probabilistic model that enables it to make predictions about how the piece will continue, relying on both its previous experience of music and the emerging themes of the piece. As events unfold, it revises its probabilistic belief state, which includes predictive distributions over possible future events. These can be characterised in terms of a handful of information theoretic-measures such as entropy and relative entropy. By tracing the evolution of these measures, we obtain a representation which captures much of the significant structure of the music.

One of the consequences of this approach is that regardless of the details of the sensory input or even which sensory modality is being processed, the resulting analysis is in terms of the same units: quantities of information (bits) and rates of information flow (bits per second). The information theoretic concepts in terms of which the analysis is framed are universal to all sorts of data. In addition, when adaptive probabilistic

models are used, expectations are created mainly in response to *patterns* of occurrence, rather the details of which specific things occur. Together, these suggest that an information dynamic analysis captures a high level of *abstraction*, and could be used to make structural comparisons between different temporal media, such as music, film, animation, and dance.

Another consequence is that the information dynamic approach gives us a principled way to address the notion of *subjectivity*, since the analysis is dependent on the probability model the observer starts off with, which may depend on prior experience or other factors, and which may change over time. Thus, inter-subject variability and variation in subjects' responses over time are fundamental to the theory.

II. THEORETICAL REVIEW

A. Entropy and information

Let X denote some variable whose value is initially unknown to our hypothetical observer. We will treat X mathematically as a random variable, with a value to be drawn from some set \mathcal{X} and a probability distribution representing the observer's beliefs about the true value of X . In this case, the observer's uncertainty about X can be quantified as the entropy of the random variable $H(X)$. For a discrete variable with probability mass function $p: \mathcal{X} \rightarrow [0, 1]$, this is

$$H(X) = \sum_{x \in \mathcal{X}} -p(x) \log p(x), \quad (1)$$

The negative-log-probability $\ell(x) = -\log p(x)$ of a particular value x can usefully be thought of as the *surprisingness* of the value x should it be observed, and hence the entropy is the expectation of the surprisingness, $E \ell(X)$.

Now suppose that the observer receives some new data \mathcal{D} that causes a revision of its beliefs about X . The *information* in this new data *about* X can be quantified as the relative entropy or Kullback-Leibler (KL) divergence between the prior and posterior distributions $p(x)$ and $p(x|\mathcal{D})$ respectively:

$$\mathcal{I}_{\mathcal{D} \rightarrow X} = D(p_{X|\mathcal{D}} || p_X) = \sum_{x \in \mathcal{X}} p(x|\mathcal{D}) \log \frac{p(x|\mathcal{D})}{p(x)}. \quad (2)$$

When there are multiple variables X_1, X_2 etc. which the observer believes to be dependent, then the observation of one may change its beliefs and hence yield information about the others. The joint and conditional entropies as described in any textbook on information theory (e.g. [16]) then quantify the observer's expected uncertainty about groups of variables given the values of others. In particular, the *mutual information* $I(X_1; X_2)$ is both the expected information in an observation of X_2 about X_1 and the expected reduction in uncertainty about X_1 after observing X_2 :

$$I(X_1; X_2) = H(X_1) - H(X_1|X_2), \quad (3)$$

where $H(X_1|X_2) = H(X_1, X_2) - H(X_2)$ is the conditional entropy of X_1 given X_2 . A little algebra shows that $I(X_1; X_2) = I(X_2; X_1)$ and so the mutual information is

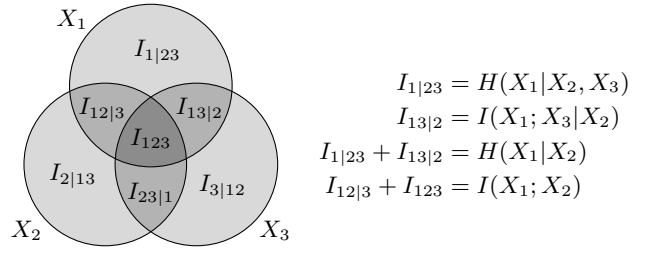


Fig. 1. I-diagram of entropies and mutual informations for three random variables X_1 , X_2 and X_3 . The areas of the three circles represent $H(X_1)$, $H(X_2)$ and $H(X_3)$ respectively. The total shaded area is the joint entropy $H(X_1, X_2, X_3)$. The central area I_{123} is the co-information [18]. Some other information measures are indicated in the legend.

symmetric in its arguments. A conditional form of the mutual information can be formulated analogously:

$$I(X_1; X_2|X_3) = H(X_1|X_3) - H(X_1|X_2, X_3). \quad (4)$$

These relationships between the various entropies and mutual informations are conveniently visualised in *information diagrams* or I-diagrams [17] such as the one in fig. 1.

B. Surprise and information in sequences

Suppose that $(\dots, X_{-1}, X_0, X_1, \dots)$ is a sequence of random variables, infinite in both directions, and that μ is the associated probability measure over all realisations of the sequence. In the following, μ will simply serve as a label for the process. We can identify a number of information-theoretic measures meaningful in the context of a sequential observation of the sequence, during which, at any time t , the sequence can be divided into a 'present' X_t , a 'past' $\bar{X}_t \equiv (\dots, X_{t-2}, X_{t-1})$, and a 'future' $\bar{X}_t \equiv (X_{t+1}, X_{t+2}, \dots)$. We will write the actually observed value of X_t as x_t , and the sequence of observations up to but not including x_t as \bar{x}_t .

The in-context surprisingness of the observation $X_t = x_t$ depends on both x_t and the context \bar{x}_t :

$$\ell_t = -\log p(x_t | \bar{x}_t). \quad (5)$$

However, before X_t is observed, the observer can compute the *expected* surprisingness as a measure of its uncertainty about X_t ; this may be written as an entropy $H(X_t | \bar{X}_t = \bar{x}_t)$, but note that this is conditional on the *event* $\bar{X}_t = \bar{x}_t$, not the *variables* \bar{X}_t as in the conventional conditional entropy.

The surprisingness ℓ_t and expected surprisingness $H(X_t | \bar{X}_t = \bar{x}_t)$ can be understood as *subjective* information dynamic measures, since they are based on the observer's probability model in the context of the actually observed sequence \bar{x}_t . They characterise what it is like to be 'in the observer's shoes'. If we view the observer as a purely passive or reactive agent, this would probably be sufficient, but for active agents such as humans or animals, it is often necessary to *anticipate* future events in order, for example, to plan the most effective course of action. It makes sense for such observers to be concerned about the predictive

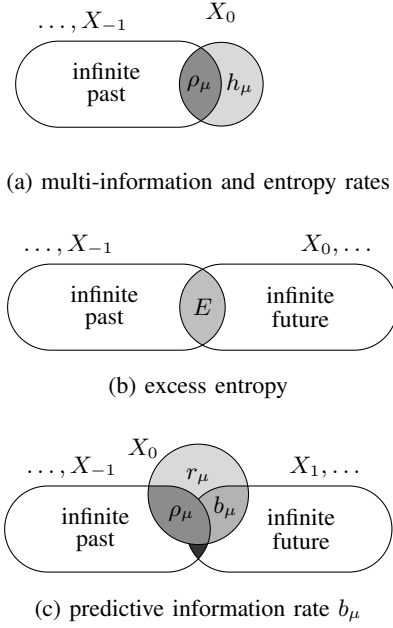


Fig. 2. I-diagrams for several information measures in stationary random processes. Each circle or oval represents a random variable or sequence of random variables relative to time $t = 0$. Overlapped areas correspond to various mutual informations. In (a) and (c), the circle represents the ‘present’. Its total area is $H(X_0) = \rho_\mu + r_\mu + b_\mu$, where ρ_μ is the multi-information rate, r_μ is the residual entropy rate, and b_μ is the predictive information rate. The entropy rate is $h_\mu = r_\mu + b_\mu$. The small dark region below X_0 in (c) is $\sigma_\mu = E - \rho_\mu$.

probability distribution over future events, $p(\vec{x}_t | \vec{x}_t)$. When an observation $X_t = x_t$ is made in this context, the *instantaneous predictive information* (IPI) \mathcal{I}_t at time t is the information in the event $X_t = x_t$ about the entire future of the sequence \vec{X}_t , given the observed past $\vec{X}_t = \vec{x}_t$. Referring to the definition of information (2), this is the KL divergence between prior and posterior distributions over possible futures, which written out in full, is

$$\mathcal{I}_t = \sum_{\vec{x}_t \in \mathcal{X}^*} p(\vec{x}_t | x_t, \vec{x}_t) \log \frac{p(\vec{x}_t | x_t, \vec{x}_t)}{p(\vec{x}_t | \vec{x}_t)}, \quad (6)$$

where the sum is to be taken over the set of infinite sequences \mathcal{X}^* . Note that it is quite possible for an event to be surprising but not informative in predictive sense. As with the surprisingness, the observer can compute its *expected IPI* at time t , which reduces to a mutual information $I(X_t; \vec{X}_t | \vec{X}_t = \vec{x}_t)$ conditioned on the observed past. This could be used, for example, as an estimate of attentional resources which should be directed at this stream of data, which may be in competition with other sensory streams.

C. Information measures for stationary random processes

If we step back, out of the observer’s shoes as it were, and consider the random process $(\dots, X_{-1}, X_0, X_1, \dots)$ as a statistical ensemble of possible realisations, and furthermore assume that it is stationary, then it becomes possible to define

a number of information-theoretic measures, closely related to those described above, but which characterise the process as a whole, rather than on a moment-by-moment basis. Some of these, such as the entropy rate, are well-known, but others are only recently being investigated. (In the following, the assumption of stationarity means that the measures defined below are independent of t .)

The *entropy rate* of the process is the entropy of the ‘present’ X_t given the ‘past’:

$$h_\mu = H(X_t | \vec{X}_t). \quad (7)$$

The entropy rate is a measure of the overall surprisingness or unpredictability of the process, and gives an indication of the average level of surprise and uncertainty that would be experienced by an observer computing the measures of § II-B on a sequence sampled from the process.

The *multi-information rate* ρ_μ (following Dubnov’s [19] notation for what he called the ‘information rate’) is the mutual information between the ‘past’ and the ‘present’:

$$\rho_\mu = I(\vec{X}_t; X_t) = H(X_t) - h_\mu. \quad (8)$$

It is a measure of how much the preceeding context of an observation helps in predicting or reducing the surprisingness of the current observation.

The *excess entropy* [20] is the mutual information between the entire ‘past’ and the entire ‘future’:

$$E = I(\vec{X}_t; X_t, \vec{X}_t). \quad (9)$$

Both the excess entropy and the multi-information rate can be thought of as measures of *redundancy*, quantifying the extent to which the same information is to be found in all parts of the sequence.

The *predictive information rate* (or PIR) [21] is the mutual information between the ‘present’ and the ‘future’ given the ‘past’:

$$b_\mu = I(X_t; \vec{X}_t | \vec{X}_t) = H(\vec{X}_t | \vec{X}_t) - H(\vec{X}_t | X_t, \vec{X}_t), \quad (10)$$

which can be read as the average reduction in uncertainty about the future on learning X_t , given the past. Due to the symmetry of the mutual information, it can also be written as

$$b_\mu = H(X_t | \vec{X}_t) - H(X_t | \vec{X}_t, \vec{X}_t) = h_\mu - r_\mu, \quad (11)$$

where $r_\mu = H(X_t | \vec{X}_t, \vec{X}_t)$, is the *residual* [22], or *erasure* [23] entropy rate. These relationships are illustrated in Fig. 2, along with several of the information measures we have discussed so far. The PIR gives an indication of the average IPI that would be experienced by an observer processing a sequence sampled from this process.

James et al [24] review several of these information measures and introduce some new related ones. In particular they identify the $\sigma_\mu = I(\vec{X}_t; \vec{X}_t | X_t)$, the mutual information between the past and the future given the present, as an interesting quantity that measures the predictive benefit of model-building, that is, maintaining an internal state summarising

past observations in order to make better predictions. It is shown as the small dark region below the circle in fig. 2(c). By comparing with fig. 2(b), we can see that $\sigma_\mu = E - \rho_\mu$.

D. First and higher order Markov chains

First order Markov chains are the simplest non-trivial models to which information dynamics methods can be applied. In [21] we derived expressions for all the information measures described in § II-B for ergodic Markov chains (i.e. that have a unique stationary distribution). We also showed that the predictive information rate can be expressed simply in terms of entropy rates: if we let a denote the $K \times K$ transition matrix of a Markov chain over an alphabet of $\{1, \dots, K\}$, such that $a_{ij} = \Pr(X_t = i | X_{t-1} = j)$, and let $h : \mathbb{R}^{K \times K} \rightarrow \mathbb{R}$ be the entropy rate function such that $h(a)$ is the entropy rate of a Markov chain with transition matrix a , then the predictive information rate is

$$b_\mu = h(a^2) - h(a), \quad (12)$$

where a^2 , the transition matrix squared, is the transition matrix of the ‘skip one’ Markov chain obtained by jumping two steps at a time along the original chain.

Second and higher order Markov chains can be treated in a similar way by transforming to a first order representation of the high order Markov chain. If we are dealing with an N th order model, this is done forming a new alphabet of size K^N consisting of all possible N -tuples of symbols from the base alphabet. An observation \hat{x}_t in this new model encodes a block of N observations $(x_{t+1}, \dots, x_{t+N})$ from the base model. The next observation \hat{x}_{t+1} encodes the block of N obtained by shifting the previous block along by one step. The new Markov of chain is parameterised by a sparse $K^N \times K^N$ transition matrix \hat{a} . Adopting the label μ for the order N system, we obtain:

$$h_\mu = h(\hat{a}), \quad b_\mu = h(\hat{a}^{N+1}) - Nh(\hat{a}), \quad (13)$$

where \hat{a}^{N+1} is the $(N+1)$ th power of the first order transition matrix. Other information measures can also be computed for the high-order Markov chain, including the multi-information rate ρ_μ and the excess entropy E . These are identical for first order Markov chains, but for order N chains, E can be up to N times larger than ρ_μ .

In our early experiments with visualising and sonifying sequences sampled from first order Markov chains [21], we found that the measures h_μ , ρ_μ and b_μ are related to perceptible characteristics, and that the kinds of transition matrices maximising or minimising each of these quantities are quite distinct. High entropy rates are associated with completely uncorrelated sequences with no recognisable temporal structure, along with low ρ_μ and b_μ . High values of ρ_μ are associated with long periodic cycles, low h_μ and low b_μ . High values of b_μ are associated with intermediate values of ρ_μ and h_μ , and recognisable, but not completely predictable, temporal structures. These relationships are visible in fig. 6 in § IV, where we pick up the thread with an application of information dynamics in a compositional aid.

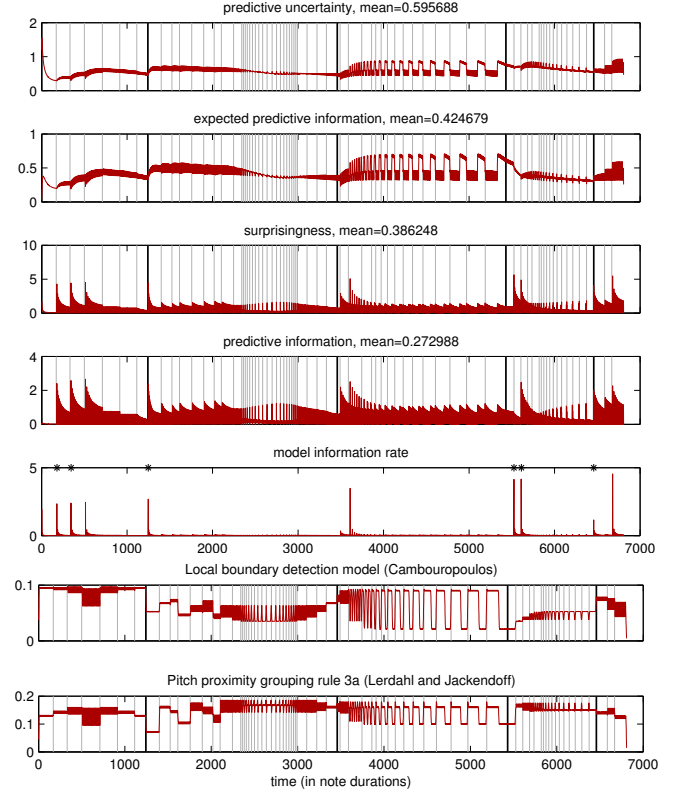


Fig. 3. Analysis of *Two Pages*. The thick vertical lines are the part boundaries as indicated in the score by the composer. The thin grey lines indicate changes in the melodic ‘figures’ of which the piece is constructed. In the ‘model information rate’ panel, the black asterisks mark the six most surprising moments selected by Keith Potter. The bottom panel shows a rule-based boundary strength analysis computed using Cambouropoulos’ LBDM. All information measures are in nats and time is in notes.

III. INFORMATION DYNAMICS IN ANALYSIS

A. Musicological Analysis

In [21], methods based on the theory described above were used to analysis two pieces of music in the minimalist style by Philip Glass: *Two Pages* (1969) and *Gradus* (1968). The analysis was done using a first-order Markov chain model, with the enhancement that the transition matrix of the model was allowed to evolve dynamically as the notes were processed, and was tracked (in a Bayesian way) as a *distribution* over possible transition matrices, rather than a point estimate. Some results are summarised in fig. 3: the upper four plots show the dynamically evolving subjective information measures as described in § II-B computed using a point estimate of the current transition matrix; the fifth plot (the ‘model information rate’) measures the information in each observation about the transition matrix. In [25], we showed that this ‘model information rate’ is actually a component of the true IPI when the transition matrix is being learned online, and was neglected when we computed the IPI from the transition matrix as if the transition probabilities were constant.

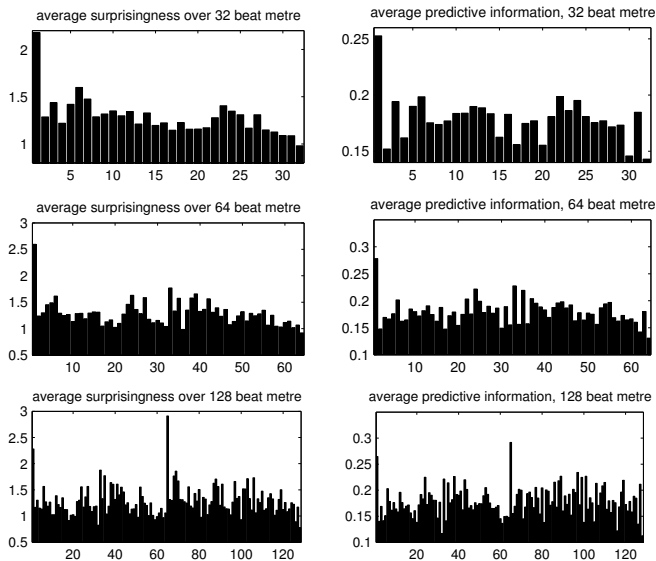


Fig. 4. Metrical analysis by computing average surprisingness and informative of notes at different periodicities (i.e. hypothetical bar lengths) and phases (i.e. positions within a bar).

The peaks of the surprisingness and both components of the predictive information show good correspondence with structure of the piece both as marked in the score and as analysed by musicologist Keith Potter, who was asked to mark the six ‘most surprising moments’ of the piece (shown as asterisks in the fifth plot)¹

In contrast, the analyses shown in the lower two plots of fig. 3, obtained using two rule-based music segmentation algorithms, while clearly *reflecting* the structure of the piece, do not *segment* the piece, with no tendency to peaking of the boundary strength function at the boundaries in the piece.

The complete analysis of *Gradus* can be found in [21], but fig. 4 illustrates the result of a metrical analysis: the piece was divided into bars of 32, 64 and 128 notes. In each case, the average surprisingness and IPI for the first, second, third etc. notes in each bar were computed. The plots show that the first note of each bar is, on average, significantly more surprising and informative than the others, up to the 64-note level, where as at the 128-note, level, the dominant periodicity appears to remain at 64 notes.

B. Content analysis/Sound Categorisation

Using analogous definitions of differential entropy, the methods outlined in the previous section are equally applicable to continuous random variables. In the case of music, where expressive properties such as dynamics, tempo, timing and timbre are readily quantified on a continuous scale, the information dynamic framework thus may also be considered.

In [19], Dubnov considers the class of stationary Gaussian processes. For such processes, the entropy rate may be

¹Note that the boundary marked in the score at around note 5,400 is known to be anomalous; on the basis of a listening analysis, some musicologists have placed the boundary a few bars later, in agreement with our analysis [26].

obtained analytically from the power spectral density of the signal, allowing the multi-information rate to be subsequently obtained. mention non-gaussian processes extension Similarly, the predictive information rate may be computed using a Gaussian linear formulation CITE. In this view, the PIR is a function of the correlation between random innovations supplied to the stochastic process. Dean (2009)

[Continuous domain information] [Audio based music expectation modelling] [Gaussian processes]

C. Beat Tracking

A probabilistic method for drum tracking was presented by Robertson [27]. The algorithm is used to synchronise a music sequencer to a live drummer. The expected beat time of the sequencer is represented by a click track, and the algorithm takes as input event times for discrete kick and snare drum events relative to this click track. These are obtained using dedicated microphones for each drum and using a percussive onset detector (Puckette 1998). The drum tracker continually updates distributions for tempo and phase on receiving a new event time. We can thus quantify the information contributed of an event by measuring the difference between the system’s prior distribution and the posterior distribution using the Kullback-Leiber divergence.

Here, we have calculated the KL divergence and entropy for kick and snare events in sixteen files. The analysis of information rates can be considered *subjective*, in that it measures how the drum tracker’s probability distributions change, and these are contingent upon the model used as well as external properties in the signal. We expect, however, that following periods of increased uncertainty, such as fills or expressive timing, the information contained in an individual event increases. We also examine whether the information is dependent upon metrical position.

IV. INFORMATION DYNAMICS AS COMPOSITIONAL AID

The use of stochastic processes in music composition has been widespread for decades—for instance Iannis Xenakis applied probabilistic mathematical models to the creation of musical materials [28]. While such processes can drive the *generative* phase of the creative process, information dynamics can serve as a novel framework for a *selective* phase, by providing a set of criteria to be used in judging which of the generated materials are of value. This alternation of generative and selective phases as been noted by art theorist Margaret Boden [29].

Information-dynamic criteria can also be used as *constraints* on the generative processes, for example, by specifying a certain temporal profile of surprisingness and uncertainty the composer wishes to induce in the listener as the piece unfolds.

In particular, the behaviour of the predictive information rate (PIR) defined in § II-C make it interesting from a compositional point of view. The definition of the PIR is such that it is low both for extremely regular processes, such as constant or periodic sequences, *and* low for extremely random processes, where each symbol is chosen independently of the others, in

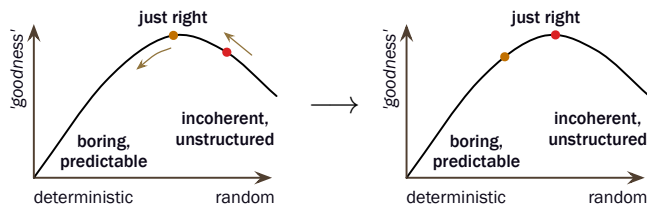


Fig. 5. The Wundt curve relating randomness/complexity with perceived value. Repeated exposure sometimes results in a move to the left along the curve [15].

a kind of ‘white noise’. In the former case, the pattern, once established, is completely predictable and therefore there is no *new* information in subsequent observations. In the latter case, the randomness and independence of all elements of the sequence means that, though potentially surprising, each observation carries no information about the ones to come.

Processes with high PIR maintain a certain kind of balance between predictability and unpredictability in such a way that the observer must continually pay attention to each new observation as it occurs in order to make the best possible predictions about the evolution of the sequence. This balance between predictability and unpredictability is reminiscent of the inverted ‘U’ shape of the Wundt curve (see fig. 5), which summarises the observations of Wundt that the greatest aesthetic value in art is to be found at intermediate levels of disorder, where there is a balance between ‘order’ and ‘chaos’.

Using the methods of §II-D, we found [21] a similar shape when plotting entropy rate against PIR—this is visible in the upper envelope of the scatter plot in fig. 6, which is a 3-D scatter plot of three of the information measures discussed in §II-C for several thousand first-order Markov chain transition matrices generated by a random sampling method. The coordinates of the ‘information space’ are entropy rate (h_μ), redundancy (ρ_μ), and predictive information rate (b_μ). The points along the ‘redundancy’ axis correspond to periodic Markov chains. Those along the ‘entropy’ axis produce uncorrelated sequences with no temporal structure. Processes with high PIR are to be found at intermediate levels of entropy and redundancy. These observations led us to construct the ‘Melody Triangle’ as a graphical interface for exploring the melodic patterns generated by each of the Markov chains represented as points in fig. 6.

A. The Melody Triangle

The Melody Triangle is an exploratory interface for the discovery of melodic content, where the input—positions within a triangle—directly map to information theoretic properties of the output. These measures address notions of expectation and surprise in music, and as such the Melody Triangle is a means of interfacing with a generative process in terms of the predictability of its output.

The triangle is populated with first order Markov chain transition matrices as illustrated in fig. 6. The distribution of transition matrices plotted in this space forms an arch shape that is fairly thin. Thus, it is a reasonable simplification

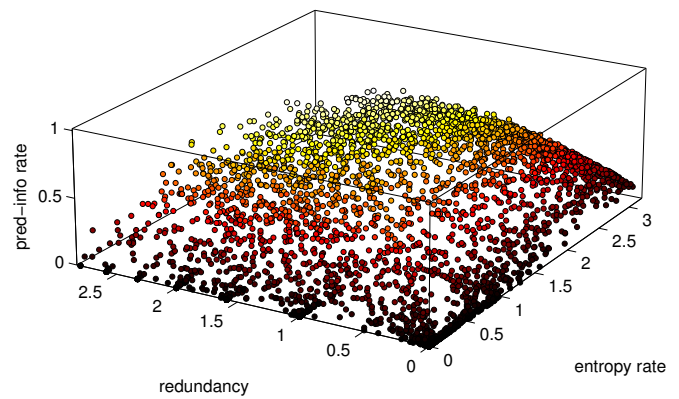


Fig. 6. The population of transition matrices distributed along three axes of redundancy, entropy rate and predictive information rate (all measured in bits). The concentrations of points along the redundancy axis correspond to Markov chains which are roughly periodic with periods of 2 (redundancy 1 bit), 3, 4, etc. all the way to period 8 (redundancy 3 bits). The colour of each point represents its PIR—note that the highest values are found at intermediate entropy and redundancy, and that the distribution as a whole makes a curved triangle. Although not visible in this plot, it is largely hollow in the middle.

to project out the third dimension (the PIR) and present an interface that is just two dimensional. The right-angled triangle is rotated and stretched to form an equilateral triangle with the $h_\mu = 0, \rho_\mu = 0$ vertex at the top, the ‘redundancy’ axis down the right-hand side, and the ‘entropy rate’ axis down the left, as shown in fig. 7. This is our ‘Melody Triangle’ and forms the interface by which the system is controlled. The user selects a position within the triangle, the point is mapped into the information space, and a corresponding transition matrix is returned. The third dimension, though not visible, is implicitly there, as transition matrices retrieved from along the centre line of the triangle will tend to have higher PIR.

Each corner corresponds to three different extremes of predictability and unpredictability, which could be loosely characterised as ‘periodicity’, ‘noise’ and ‘repetition’. Melodies from the ‘noise’ corner (high h_μ , low ρ_μ and b_μ) have no discernible pattern; Melodies along the ‘periodicity’ to ‘repetition’ edge are all deterministic loops that get shorter as we approach the ‘repetition’ corner, until each is just one repeating note. The areas in between will tend to have higher PIR, and we hypothesise that, under the appropriate conditions, these will be perceived as more ‘interesting’ or ‘melodic.’

The Melody Triangle exists in two incarnations; a standard screen based interface where a user moves tokens in and around a triangle on screen, and a multi-user interactive installation where a Kinect camera tracks individuals in a space and maps their positions in physical space to the triangle. In the latter each visitor that enters the installation generates a melody and can collaborate with their co-visitors to generate musical textures. This makes the interaction physically engaging and (as our experience with visitors both young and old has demonstrated) more playful.

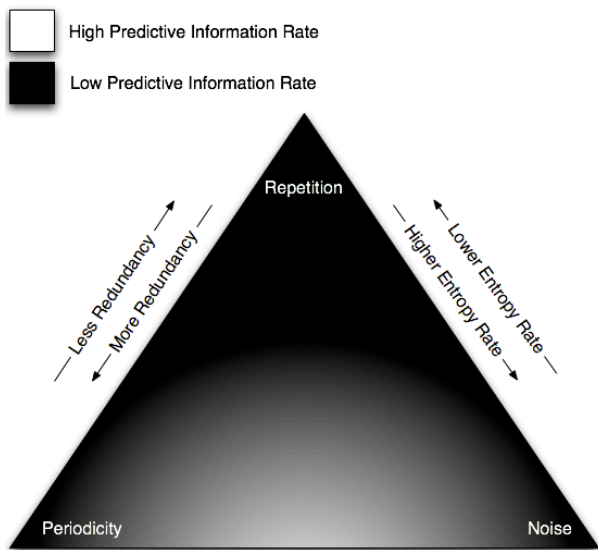


Fig. 7. The Melody Triangle

As a screen based interface the Melody Triangle can serve as a composition tool. A number of tokens, each representing a melody, can be dragged in and around the triangle. For each token, a sequence of symbols with statistical properties that correspond to the token's position is generated. These symbols are then mapped to notes of a scale or percussive sounds. However they could easily be mapped to other musical processes, possibly over different time scales, such as chords, dynamics and timbres. It would also be possible to map the symbols to visual or kinetic outputs. Additionally keyboard commands give control over other musical parameters such as pitch register and note duration.

The Melody Triangle can generate intricate musical textures when multiple tokens are in the triangle. Unlike other computer aided composition tools or programming environments, here the composer engages with music on a high and abstract level; the interface relating to subjective expectation and predictability.

B. Information Dynamics as Evaluative Feedback Mechanism

Information measures on a stream of symbols can form a feedback mechanism; a rudimentary 'critic' of sorts. For instance symbol by symbol measure of predictive information rate, entropy rate and redundancy could tell us if a stream of symbols is currently 'boring', either because it is too repetitive, or because it is too chaotic. Such feedback would be oblivious to long term and large scale structures and any cultural norms (such as style conventions), but nonetheless could provide a composer with valuable insight on the short term properties of a work. This could not only be used for the evaluation of pre-composed streams of symbols, but could also provide real-time feedback in an improvisatory setup.

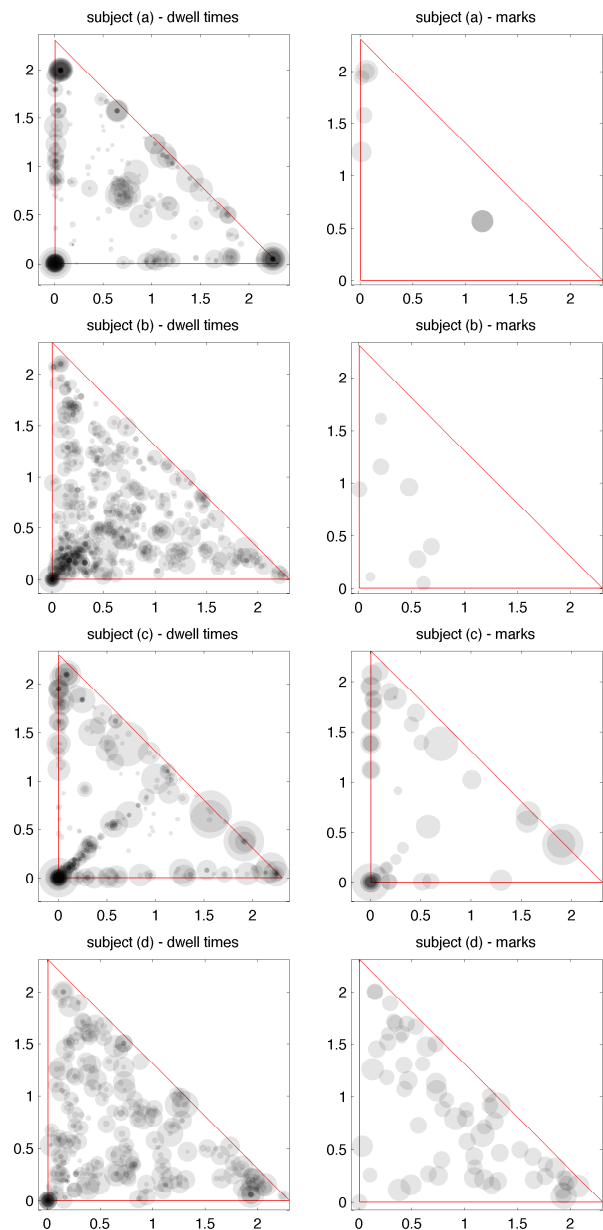


Fig. 8. Dwell times and mark positions from user trials with the on-screen Melody Triangle interface. The left-hand column shows the positions in a 2D information space (entropy rate vs multi-information rate in bits) where spent their time; the area of each circle is proportional to the time spent there. The right-hand column shows point which subjects 'liked'.

V. MUSICAL PREFERENCE AND INFORMATION DYNAMICS

We are carrying out a study to investigate the relationship between musical preference and the information dynamics models, the experimental interface a simplified version of the screen-based Melody Triangle. Participants are asked to use this music pattern generator under various experimental conditions in a composition task. The data collected includes usage statistics of the system: where in the triangle they place the tokens, how long they leave them there and the state of the system when users, by pressing a key, indicate that they

like what they are hearing. As such the experiments will help us identify any correlation between the information theoretic properties of a stream and its perceived aesthetic worth.

Some initial results for four subjects are shown in fig. 8. Though subjects seem to exhibit distinct kinds of exploratory behaviour, we have not been able to show any systematic across-subjects preference for any particular region of the triangle.

Subjects' comments: several noticed the main organisation of the triangle: repetitive notes at the top, cyclic patterns along the right edge, and unpredictable notes towards the bottom left (a,c,f). Some did systematic exploration. Felt that the right side was more 'controllable' than the left (a,f)—a direct consequence of their ability to return to a particular periodic pattern and recognise it as one heard previously. Some (a,e) felt the trial was too long and became bored towards the end. One subject (f) felt there wasn't enough time to get to hear out the patterns properly. One subject (b) didn't enjoy the lower region whereas another (d) said the lower regions were more 'melodic' and 'interesting'.

VI. CONCLUSION

We outlined our information dynamics approach to the modelling of the perception of music. This approach models the subjective assessments of an observer that updates its probabilistic model of a process dynamically as events unfold. We outlined 'time-varying' information measures, including a novel 'predictive information rate' that characterises the surprisingness and predictability of musical patterns.

We have outlined how information dynamics can serve in three different forms of analysis; musicological analysis, sound categorisation and beat tracking.

We have described the 'Melody Triangle', a novel system that enables a user/composer to discover musical content in terms of the information theoretic properties of the output, and considered how information dynamics could be used to provide evaluative feedback on a composition or improvisation. Finally we outline a pilot study that used the Melody Triangle as an experimental interface to help determine if there are any correlations between aesthetic preference and information dynamics measures.

ACKNOWLEDGMENTS

This work is supported by EPSRC Doctoral Training Centre EP/G03723X/1 (HE), GR/S82213/01 and EP/E045235/1(SA), an EPSRC DTA Studentship (PF), an RAEng/EPSRC Research Fellowship 10216/88 (AR), an EPSRC Leadership Fellowship, EP/G007144/1 (MDP) and EPSRC IDyOM2 EP/H013059/1. This work is partly funded by the CoSound project, funded by the Danish Agency for Science, Technology and Innovation. Thanks also Marcus Pearce for providing the two rule-based analyses of *Two Pages*.

REFERENCES

- [1] C. E. Shannon, "A mathematical theory of communication," *The Bell System Technical Journal*, vol. 27, pp. 379–423, 623–656, 1948.
- [2] J. E. Youngblood, "Style as information," *Journal of Music Theory*, vol. 2, pp. 24–35, 1958.
- [3] E. Coons and D. Kraehenbuehl, "Information as a measure of structure in music," *Journal of Music Theory*, vol. 2, no. 2, pp. 127–161, 1958.
- [4] L. Hiller and C. Bean, "Information theory analyses of four sonata expositions," *Journal of Music Theory*, vol. 10, no. 1, pp. 96–137, 1966.
- [5] A. Moles, *Information Theory and Esthetic Perception*. University of Illinois Press, 1966.
- [6] L. B. Meyer, *Music, the arts and ideas: Patterns and Predictions in Twentieth-century culture*. University of Chicago Press, 1967.
- [7] J. E. Cohen, "Information theory and music," *Behavioral Science*, vol. 7, no. 2, pp. 137–163, 1962.
- [8] E. Narmour, *Beyond Schenkerism*. University of Chicago Press, 1977.
- [9] E. Hanslick, *On the musically beautiful: A contribution towards the revision of the aesthetics of music*. Indianapolis, IN: Hackett, 1854/1986.
- [10] J. R. Saffran, E. K. Johnson, R. N. Aslin, and E. L. Newport, "Statistical learning of tone sequences by human infants and adults," *Cognition*, vol. 70, no. 1, pp. 27–52, 1999.
- [11] T. Eerola, P. Toivainen, and C. L. Krumhansl, "Real-time prediction of melodies: Continuous predictability judgments and dynamic models," in *Proceedings of the 7th International Conference on Music Perception and Cognition (ICMPC7)*, C. Stevens, D. Burnham, G. McPherson, E. Schubert, and J. Renwick, Eds. Sydney, Australia: Causal Productions, 2002.
- [12] D. Conklin and I. H. Witten, "Multiple viewpoint systems for music prediction," *Journal of New Music Research*, vol. 24, no. 1, pp. 51–73, 1995.
- [13] D. Ponsford, G. A. Wiggins, and C. S. Mellish, "Statistical learning of harmonic movement," *Journal of New Music Research*, vol. 28, no. 2, pp. 150–177, 1999, also available as Research Paper 874, from the Division of Informatics, University of Edinburgh.
- [14] M. T. Pearce, "The construction and evaluation of statistical models of melodic structure in music perception and composition," Ph.D. dissertation, Department of Computing, City University, London, 2005.
- [15] D. E. Berlyne, *Aesthetics and Psychobiology*. New York: Appleton Century Crofts, 1971.
- [16] T. M. Cover and J. A. Thomas, *Elements of Information Theory*. New York: John Wiley and Sons, 1991.
- [17] R. Yeung, "A new outlook on Shannon's information measures," *Information Theory, IEEE Transactions on*, vol. 37, no. 3, pp. 466–474, 1991.
- [18] W. McGill, "Multivariate information transmission," *Information Theory, IRE Professional Group on*, vol. 4, no. 4, pp. 93–111, 1954.
- [19] S. Dubnov, "Spectral anticipations," *Computer Music Journal*, vol. 30, no. 2, pp. 63–83, 2006.
- [20] J. Crutchfield and N. Packard, "Symbolic dynamics of noisy chaos," *Physica D: Nonlinear Phenomena*, vol. 7, no. 1-3, pp. 201–223, 1983.
- [21] S. A. Abdallah and M. D. Plumbley, "Information dynamics: Patterns of expectation and surprise in the perception of music," *Connection Science*, vol. 21, no. 2, pp. 89–117, 2009.
- [22] —, "Predictive information, multi-information and binding information," Queen Mary University of London, Tech. Rep. C4DM-TR-10-10, 2010.
- [23] S. Verdú and T. Weissman, "Erasure entropy," in *IEEE International Symposium on Information Theory (ISIT 2006)*, 2006, pp. 98–102.
- [24] R. G. James, C. J. Ellison, and J. P. Crutchfield, "Anatomy of a bit: Information in a time series observation," *Chaos*, vol. 21, no. 3, p. 037109, 2011.
- [25] S. A. Abdallah and M. D. Plumbley, "Predictive information and Bayesian surprise in exchangeable random processes," Queen Mary University of London, Tech. Rep. C4DM-TR10-09, 2010.
- [26] K. Potter, G. A. Wiggins, and M. T. Pearce, "Towards greater objectivity in music theory: Information-dynamic analysis of minimalist music," *Musicae Scientiae*, vol. 11, no. 2, pp. 295–324, 2007.
- [27] A. Robertson, "A bayesian approach to drum tracking," in *Proceedings of the 8th Sound and Music Computing Conference (SMC)*, 2011.
- [28] I. Xenakis, *Formalized music : thought and mathematics in composition*. Stuyvesant, NY: Pendragon Press, 1992.
- [29] M. Boden, *The Creative Mind: Myths and Mechanisms*. Weidenfeld & Nicolson, 1990.